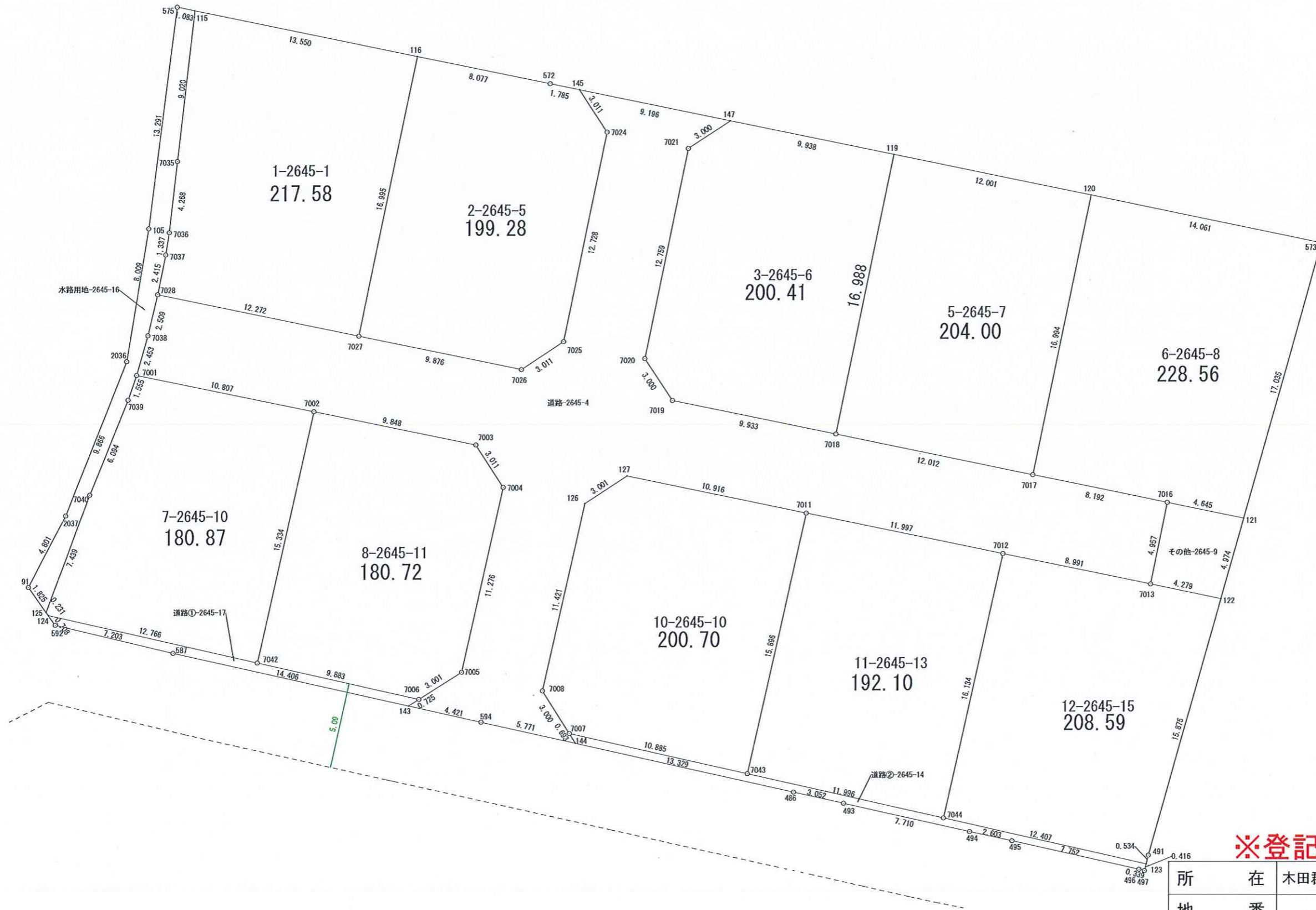




実測図 S=1:250



※登記未完了 (予定図)

所在	木田郡三木町大字池戸字下所2645-1他
地番	
作製年月日	令和5年12月16日
作製者	土地家屋調査士・二級建築士 岡野上竜二 宅地建物取引士

求積表

地番 A 1-2645-1					
NO	Xn	Yn	Yn+1-Yn-1	Xn · (Yn+1-Yn-1)	
115	142086.408	57815.694	14.295	2031125.202360	
116	142083.683	57828.967	9.843	1398529.691769	
7027	142067.038	57825.537	-15.449	-2194793.670062	
7028	142069.515	57813.518	-11.544	-1640050.481160	
7037	142071.883	57813.993	0.683	97035.096089	
7036	142073.204	57814.201	0.679	96467.705516	
7035	142077.446	57814.672	1.493	212121.626878	
			合計	435.171390	
			合計面積	217.5856950	
			地積	217.58 m <sup>2</sup>	

地番 B 道路-2645-4					
NO	Xn	Yn	Yn+1-Yn-1	Xn · (Yn+1-Yn-1)	
7001	142064.714	57812.267	-9.919	-1409139.898166	
7038	142067.074	57812.936	1.251	177725.909574	
7028	142069.515	57813.518	12.601	1790217.958515	
7027	142067.038	57825.537	21.692	3081718.188296	
7026	142065.048	57835.210	12.182	1730636.414736	
7025	142066.713	57837.719	5.067	719852.034771	
7024	142079.181	57840.277	0.909	129149.975529	
145	142081.700	57838.628	7.359	1045579.230300	
147	142079.851	57847.636	6.502	923803.191202	
7021	142078.202	57845.130	-5.074	-720904.796948	
7020	142065.704	57842.562	-0.906	-128711.527824	
7019	142063.208	57844.224	11.392	1618384.065536	
7018	142061.212	57853.954	21.495	3053605.751940	
7017	142058.791	57865.719	19.790	2811343.473890	
7016	142057.143	57873.744	7.040	1000082.286720	
7013	142052.285	57872.759	-9.791	-1390833.922435	
7012	142054.099	57863.953	-20.559	-2920490.221341	
7011	142056.505	57852.200	-22.443	-3188174.141715	
127	142058.713	57841.510	-13.199	-1875032.952887	
126	142057.067	57839.001	-5.011	-711847.962737	
7008	142045.923	57836.499	-0.901	-127983.376623	
7007	142043.387	57838.100	1.971	279967.515777	
144	142042.801	57838.470	-5.262	-747429.218862	
594	142044.058	57832.838	-9.945	-1412628.156810	
143	142045.029	57828.525	-3.701	-525708.652329	
7006	142045.418	57829.137	3.145	446732.839610	
7005	142047.028	57831.670	5.001	710377.187028	
7004	142058.031	57834.138	0.830	117908.165730	
7003	142060.558	57832.500	-11.283	-1602869.275914	
7002	142062.548	57822.855	-20.233	-2874351.533684	
			合計	978.550879	
			合計面積	489.2754395	
			地積	489.27 m <sup>2</sup>	

地番 C 2-2645-5					
NO	Xn	Yn	Yn+1-Yn-1	Xn · (Yn+1-Yn-1)	
116	142083.683	57828.967	11.342	1611513.132586	
572	142082.059	57836.879	9.661	1372654.771999	
145	142081.700	57838.628	3.398	482793.616600	
7024	142079.181	57840.277	-0.909	-129149.975529	
7025	142066.713	57837.719	-5.067	-719852.034771	
7026	142065.048	57835.210	-12.182	-1730636.414736	
7027	142067.038	57825.537	-6.243	-886924.518234	
			合計	398.577915	
			合計面積	199.2889575	
			地積	199.28 m <sup>2</sup>	

地番 D 3-2645-6					
NO	Xn	Yn	Yn+1-Yn-1	Xn · (Yn+1-Yn-1)	
7021	142078.202	57845.130	5.074	720904.796948	
147	142079.851	57847.636	12.241	1739199.456091	
119	142077.853	57857.371	6.318	897647.875254	
7018	142061.212	57853.954	-13.147	-1867678.754164	
7019	142063.208	57844.224	-11.392	-1618384.065536	
7020	142065.704	57842.562	0.906	128711.527824	
			合計	400.836417	
			合計面積	200.4182085	
			地積	200.41 m <sup>2</sup>	

地番 E 5-2645-7					
NO	Xn	Yn	Yn+1-Yn-1	Xn · (Yn+1-Yn-1)	
119	142077.853	57857.371	15.173	2155747.263569	
120	142075.440	57869.127	8.348	1186045.773120	
7017	142058.791	57865.719	-15.173	-2155458.035843	
7018	142061.212	57853.954	-8.348	-1185926.997776	
			合計	408.003070	
			合計面積	204.0015350	
			地積	204.00 m <sup>2</sup>	

地番 F 6-2645-8					
NO	Xn	Yn	Yn+1-Yn-1	Xn · (Yn+1-Yn-1)	
120	142075.440	57869.127	17.182	2441140.210080	
573	142072.613	57882.901	9.168	1302521.715984	
121	142056.212	57878.295	-9.157	-1300808.733284	
7016	142057.143	57873.744	-12.576	-1786510.630368	
7017	142058.791	57865.719	-4.617	-655885.438047	
			合計	457.124365	
			合計面積	228.5621825	
			地積	228.56 m <sup>2</sup>	

地番 G その他-2645-9					
NO	Xn	Yn	Yn+1-Yn-1	Xn · (Yn+1-Yn-1)	
7016	142057.143	57873.744	5.536	786428.343648	
121	142056.212	57878.295	3.206	455432.215672	
122	142051.423	57876.950	-5.536	-786396.677728	
7013	142052.285	57872.759	-3.206	-455419.625710	
			合計	44.255882	
			合計面積	22.1279410	
			地積	22.12 m <sup>2</sup>	

地番 H 7-2645-10					
NO	Xn	Yn	Yn+1-Yn-1	Xn · (Yn+1-Yn-1)	
7001	142064.714	57812.267	11.094	1576065.937116	
7002	142062.548	57822.855	7.228	1026828.096944	
7042	142047.587	57819.495	-15.807	-2245346.207709	
124	142050.422	57807.048	-12.582	-1787278.409604	
125	142050.610	57806.913	2.447	347597.842670	
7040	142057.587	57809.495	4.848	688695.181776	
7039	142063.244	57811.761	2.772	393799.312368	
			合計	361.753561	
			合計面積	180.8767805	
			地積	180.87 m <sup>2</sup>	

地番 I 8-2645-11					
NO	Xn	Yn	Yn+1-Yn-1	Xn · (Yn+1-Yn-1)	
7002	142062.548	57822.855	13.005	1847523.436740	
7003	142060.558	57832.500	11.283	1602869.275914	
7004	142058.031	57834.138	-0.830	-117908.165730	
7005	142047.028	57831.670	-5.001	-710377.187028	
7006	142045.418	57829.137	-12.175	-1729402.964150	
7042	142047.587	57819.495	-6.282	-892342.941534	
			合計	361.454212	
			合計面積	180.7271060	
			地積	180.72 m <sup>2</sup>	

地番 J 10-2645-10					
NO	Xn	Yn	Yn+1-Yn-1	Xn · (Yn+1-Yn-1)	
126	142057.067	57839.001	5.011	711847.962737	
127	142058.713	57841.510	13.199	1875032.952887	
7011	142056.505	57852.200	7.209	1024085.344545	
7043	142040.995	57848.719	-14.100	-2002778.029500	
7007	142043.387	57838.100	-12.220	-1735770.189140	
7008	142045.923	57836.499	0.901	127983.376623	
			合計	401.418152	
			合計面積	200.7090760	
			地積	200.70 m <sup>2</sup>	

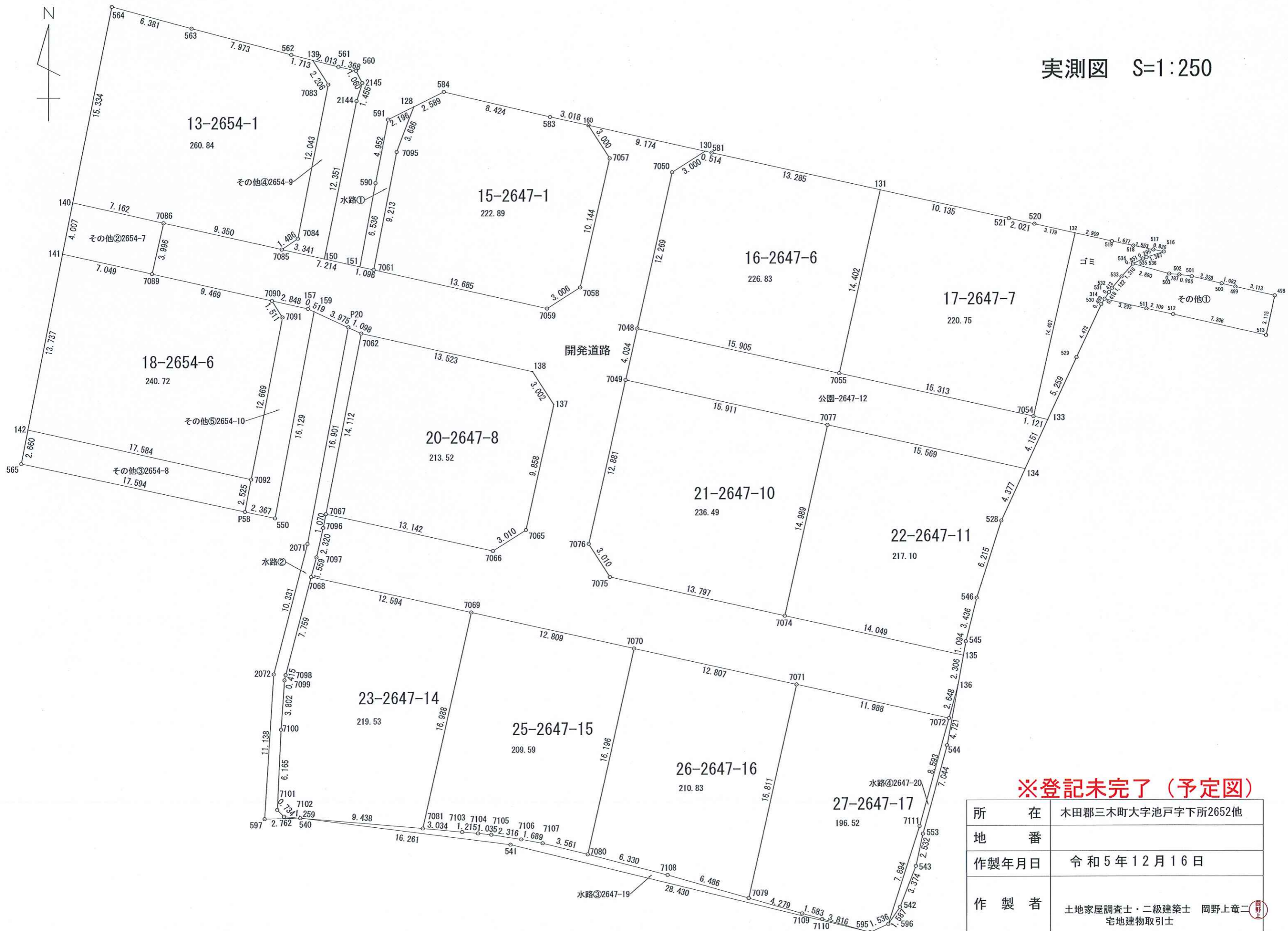
地番 K 11-2645-13					
NO	Xn	Yn	Yn+1-Yn-1	Xn · (Yn+1-Yn-1)	
7011	142056.505	57852.200	15.234	2164088.797170	
7012	142054.099	57863.953	8.221	1167826.747879	
7044	142038.356	57860.421	-15.234	-2163812.315304	
7043	142040.995	57848.719	-8.221	-1167719.019895	
			合計	384.209850	
			合計面積	192.1049250	
			地積	192.10 m <sup>2</sup>	

地番 L 道路②-2645-14					
NO	Xn	Yn	Yn+1-Yn-1	Xn · (Yn+1-Yn-1)	
144	142042.801	57838.470	-13.379	-1900390.634579	
7007	142043.387	57838.100	10.249	1455802.673363	
7043	142040.995	57848.719	22.321	3170497.049395	
7044	142038.356	57860.421	23.804	3381081.026224	
123	142035.623	57872.523	11.998	1704143.404754	
497	142035.220	57872.419	-0.433	-61501.250260	
496	142035.300	57872.090	-7.892	-1120942.587600	
495	142037.001	57864.527	-10.109	-1435852.043109	
494	142037.545	57861.981	-10.069	-1430176.040605	
493	142039.233	57854.458	-10.502	-1491696.024966	
486	142039.897	57851.479	-15.988	-2270933.873236	
			合計	31.699381	
			合計面積	15.8496905	
			地積	15.84 m <sup>2</sup>	

地番 M 12-2645-15					
NO	Xn	Yn	Yn+1-Yn-1	Xn · (Yn+1-Yn-1)	
7012	142054.099	57863.953	12.338	1752663.473462	
7013	142052.285	57872.759	12.997	1846253.548145	
122	142051.423	57876.950	-0.102	-14489.245146	
491	142036.140	57872.657	-4.427	-628793.991780	
123	142035.623	57872.523	-12.236	-1737947.883028	
7044	142038.356	57860.421	-8.570	-1217268.710920	
			合計	417.190733	
			合計面積	208.5953665	
			地積	208.59 m <sup>2</sup>	

地番 N 水路用地-2645-16					
NO	Xn	Yn	Yn+1-Yn-1	Xn · (Yn+1-Yn-1)	
575	142086.626	57814.633	2.718	386191.449468	
115	142086.408	57815.694	0.039	5541.369912	
7035	142077.446	57814.672	-1.493	-212121.626878	
7036	142073.204	57814.201	-0.679	-96467.705516	
7037	142071.883	57813.993	-0.683	-97035.096089	
7028	142069.515	57813.518	-1.057	-150167.477355	
7038	142067.074	57812.936	-1.251	-177725.909574	
7001	142064.714	57812.267	-1.175	-166926.038950	
7039	142063.244	57811.761	-2.772	-393799.312368	
7040	142057.587	57809.495	-4.848	-688695.181776	
125	142050.610	57806.913	-3.644	-517632.422840	
91	142052.094	57805.851	1.155	164070.168570	
2037	142056.353	57808.068	5.821	826910.030813	
2036	142065.537	57811.672	4.908	697257.655596	
105	142073.439	57812.97			

実測図 S=1:250



※登記未完了 (予定図)

所在	木田郡三木町大字池戸字下所2652他
地番	
作製年月日	令和5年12月16日
作製者	土地家屋調査士・二級建築士 岡野上竜二 宅地建物取引士

求積表

地番 A 13-2654-1					
NO	Xn	Yn	Yn+1-Yn-1	Xn · (Yn+1-Yn-1)	
564	142051.871	57781.481	9.099	1292529.974229	
563	142050.184	57787.635	13.862	1969099.650608	
562	142048.145	57795.343	9.367	1330564.974215	
139	142047.719	57797.002	2.838	403131.426522	
7083	142045.854	57798.181	-1.125	-159801.585750	
7084	142034.033	57795.877	-3.535	-502090.306655	
7085	142033.201	57794.646	-10.354	-1470611.763154	
7086	142035.248	57785.523	-16.110	-2288187.845280	
140	142036.822	57778.536	-4.042	-574112.834524	
合計				521.690211	
合計面積				260.8451055	
地積				260.84	㎡

地番 B 15-2647-1					
NO	Xn	Yn	Yn+1-Yn-1	Xn · (Yn+1-Yn-1)	
7095	142040.671	57803.440	3.048	432939.965208	
128	142044.122	57804.734	3.616	513631.545152	
584	142045.268	57807.056	10.515	1493605.993020	
583	142043.310	57815.249	11.138	1582078.386780	
160	142042.651	57818.194	4.561	647856.531211	
7057	142040.124	57819.810	-0.618	-87780.796632	
7058	142030.229	57817.576	-4.773	-677910.283017	
7059	142028.620	57815.037	-15.890	-2256834.771800	
7061	142031.627	57801.686	-11.597	-1647140.778319	
合計				445.791603	
合計面積				222.8958015	
地積				222.89	㎡

地番 C 16-2647-6					
NO	Xn	Yn	Yn+1-Yn-1	Xn · (Yn+1-Yn-1)	
7050	142039.038	57824.625	5.204	739171.153752	
130	142040.644	57827.159	3.036	431235.395184	
581	142040.532	57827.661	13.468	1913001.884976	
131	142037.638	57840.627	9.814	1393957.379332	
7055	142023.585	57837.475	-18.672	-2651864.379120	
7048	142027.063	57821.955	-12.850	-1825047.759550	
合計				453.674574	
合計面積				226.8372870	
地積				226.83	㎡

地番 D 17-2647-7					
NO	Xn	Yn	Yn+1-Yn-1	Xn · (Yn+1-Yn-1)	
131	142037.638	57840.627	13.044	1852738.950072	
521	142035.431	57850.519	11.866	1685392.424246	
520	142034.999	57852.493	5.075	720827.619925	
132	142034.299	57855.594	-0.073	-10368.503827	
7054	142020.246	57852.420	-18.119	-2573264.837274	
7055	142023.585	57837.475	-11.793	-1674884.137905	
合計				441.515237	
合計面積				220.7576185	
地積				220.75	㎡

地番 E 18-2654-6					
NO	Xn	Yn	Yn+1-Yn-1	Xn · (Yn+1-Yn-1)	
141	142032.889	57777.767	9.517	1351727.004613	
7089	142031.349	57784.646	16.117	2289119.251833	
7090	142029.269	57793.884	10.059	1428672.416871	
7091	142028.001	57794.705	-1.596	-226676.689596	
7092	142015.565	57792.288	-19.576	-2780096.700440	
142	142019.408	57775.129	-14.521	-2062263.823568	
合計				481.459713	
合計面積				240.7298565	
地積				240.72	㎡

地番 F 20-2647-8					
NO	Xn	Yn	Yn+1-Yn-1	Xn · (Yn+1-Yn-1)	
7062	142026.750	57800.736	15.889	2256663.030750	
138	142023.788	57813.931	14.821	2104934.561948	
137	142021.265	57815.557	-0.515	-73140.951475	
7065	142011.642	57813.416	-4.688	-665750.577696	
7066	142010.038	57810.869	-15.374	-2183262.324212	
7067	142012.898	57798.042	-10.133	-1439016.695434	
合計				427.043881	
合計面積				213.5219405	
地積				213.52	㎡

地番 G 21-2647-10					
NO	Xn	Yn	Yn+1-Yn-1	Xn · (Yn+1-Yn-1)	
7049	142023.130	57821.060	18.345	2605414.319850	
7077	142019.624	57836.580	12.247	1739314.335128	
7074	142004.997	57833.307	-16.735	-2376453.624795	
7075	142008.020	57819.845	-15.072	-2140344.877440	
7076	142010.563	57818.235	1.215	172542.834045	
合計				472.986788	
合計面積				236.4933940	
地積				236.49	㎡

地番 H 22-2647-11					
NO	Xn	Yn	Yn+1-Yn-1	Xn · (Yn+1-Yn-1)	
7077	142019.624	57836.580	18.465	2622392.357160	
134	142016.220	57851.772	13.359	1897194.682980	
528	142012.245	57849.939	-3.730	-529705.673850	
546	142006.327	57848.042	-2.730	-387677.272710	
545	142002.994	57847.209	-1.028	-145979.077832	
135	142001.918	57847.014	-13.902	-1974110.664036	
7074	142004.997	57833.307	-10.434	-1481680.138698	
合計				434.213014	
合計面積				217.1065070	
地積				217.10	㎡

地番 I 23-2647-14					
NO	Xn	Yn	Yn+1-Yn-1	Xn · (Yn+1-Yn-1)	
7068	142008.080	57796.920	14.251	2023757.148080	
7069	142005.331	57809.210	8.568	1216701.676008	
7081	141988.756	57805.488	-13.124	-1863460.433744	
540	141989.579	57796.086	-10.656	-1513040.953824	
7102	141989.694	57794.832	-1.770	-251320.758380	
7101	141990.216	57794.316	-0.223	-31663.818168	
7100	141996.374	57794.609	0.557	79091.980318	
7099	142000.167	57794.873	0.350	49700.058450	
7098	142000.573	57794.959	2.047	290675.172931	
合計				439.071671	
合計面積				219.5358355	
地積				219.53	㎡

地番 J 25-2647-15					
NO	Xn	Yn	Yn+1-Yn-1	Xn · (Yn+1-Yn-1)	
7069	142005.331	57809.210	16.221	2303468.474151	
7070	142002.530	57821.709	8.940	1269502.618200	
7080	141986.730	57818.150	-7.012	-995610.950760	
7107	141987.599	57814.697	-5.115	-726266.568885	
7106	141987.899	57813.035	-3.949	-560710.213151	
7105	141988.263	57810.748	-3.316	-470833.080108	
7104	141988.370	57809.719	-2.239	-317911.960430	
7103	141988.478	57808.509	-4.231	-600753.250418	
7081	141988.756	57805.488	0.701	99534.117956	
合計				419.186555	
合計面積				209.5932775	
地積				209.59	㎡

地番 K 26-2647-16					
NO	Xn	Yn	Yn+1-Yn-1	Xn · (Yn+1-Yn-1)	
7070	142002.530	57821.709	16.056	2279992.621680	
7071	141999.727	57834.206	8.797	1249171.598419	
7079	141983.328	57830.506	-9.933	-1410320.397024	
7108	141985.123	57824.273	-12.356	-1754368.179788	
7080	141986.730	57818.150	-2.564	-364053.975720	
合計				421.667567	
合計面積				210.8337835	
地積				210.83	㎡

地番 L 27-2647-17					
NO	Xn	Yn	Yn+1-Yn-1	Xn · (Yn+1-Yn-1)	
7071	141999.727	57834.206	15.396	2186227.796892	
7072	141997.095	57845.902	9.422	1337896.629090	
7111	141988.808	57843.628	-4.688	-665643.531904	
596	141981.292	57841.214	-3.817	-541942.591564	
595	141980.668	57839.811	-5.080	-721261.793440	
7110	141981.689	57836.134	-5.197	-737878.837733	
7109	141982.130	57834.614	-5.628	-799075.427640	
7079	141983.328	57830.506	-0.408	-57929.197824	
合計				393.045877	
合計面積				196.5229385	
地積				196.52	㎡

地番 M 公園-2647-12					
NO	Xn	Yn	Yn+1-Yn-1	Xn · (Yn+1-Yn-1)	
7048	142027.063	57821.955	16.415	2331374.239145	
7055	142023.585	57837.475	30.465	4326748.517025	
7054	142020.246	57852.420	16.036	2277436.664856	
133	142019.989	57853.511	-0.648	-92028.952872	
134	142016.220	57851.772	-16.931	-2404476.620820	
7077	142019.624	57836.580	-30.712	-4361706.692288	
7049	142023.130	57821.060	-14.625	-2077088.276250	
合計				258.878796	
合計面積				129.4393980	
地積				129.43	㎡

地番 N コミ-2647-13					
NO	Xn	Yn	Yn+1-Yn-1	Xn · (Yn+1-Yn-1)	
132	142034.299	57855.594	6.012	853910.205588	
519	142033.659	57858.432	4.478	636026.725002	
518	142033.308	57860.072	3.173	450671.686284	
517	142033.001	57861.605	2.343	332783.321343	
516	142032.839	57862.415	-0.523	-74283.174797	
536	142032.420	57861.082	-1.603	-227677.969260	
535	142032.300	57860.812	-1.032	-146577.333600	
534	142031.920	57860.050	-1.639	-232790.316880	
533	142030.939	57859.173	-1.590	-225829.193010	
532	142030.073	57858.460	-0.962	-136632.930226	
531	142029.744	57858.211	-0.593	-84223.638192	
314	142029.230	57857.867	-0.607	-86211.742610	
530	142028.818	57857.604	-2.154	-305930.073972	
529	142024.765	57855.713	-4.093	-581307.363145	
133	142019.989	57853.511	-3.293	-467671.823777	
7054	142020.246	57852.420	2.083	295828.172418	
合計				84.551166	
合計面積				42.2755830	
地積				42.27	㎡

地番 O 開発道路					
NO	Xn	Yn	Yn+1-Yn-1	Xn · (Yn+1-Yn-1)	
7062	142026.750	57800.736	-16.797	-2385623.319750	
159	142028.432	57797.134	-4.072	-578339.775104	
157	142028.652	57796.664	-3.250	-461593.119000	
7090	142029.269	57793.884	-12.018	-1706907.754842	
7089	142031.349	57784.646	-8.361	-1187524.108989	
7086	142035.248	57785.523	10.000	1420352.480000	
7085	142033.201	57794.646	16.163	2295682.627763	
7061	142031.627	57801.686	20.391	289	